

Our Leadership Team

Trustee Members

Russell DeSalvo
Chairman
Andrew Trainor
Vice-Chairman
Christopher Burke
Adam Carroll
Brandice Eslinger
Angela Giron
Chad Heberly
Louis Nazario
Michael Occhiato

**Trustee Members
(continued)**

Ruben Pena
Carol Rickman
Alex Romero
Jackie Seybold
Darrin Smith
Marv Stein
Abel Tapia
Chris Turner
Barbara Vidmar
Dee Weber
David Williams
Ralph Williams

**Sustaining
Trustees**

Walt Bassett, Jr.
Dave Feamster
Rita Gersick
Art Gonzales
Greg Hahn
Joyce Lawrence
Bob Leach
Gerry Montgomery
John Oeschle
Jane Rawlings
Tim Simmons
Jim Wallace

Foundation Staff

Todd Kelly
President/CEO
Valerie Gallegos
Director of Budget & Finance
Sandy Lundahl
Scholarship Manager
Sammi Mutz
Marketing & Stewardship Specialist
Susie Pagnotta
Director of Data Analysis & Gift Processing
Nick Potter
Chief Operating Officer
Andrew Sanchez
Director of Development

On August 31, 2016, Colorado State University – Pueblo marked the successful conclusion of the On the Move campaign, a campaign announced just three years earlier. After three years, the ambitious goal of \$25 million was surpassed, raising a final total of \$28.4 million.

The CSU-Pueblo Foundation exceeded its goal thanks to gifts and pledges of \$28,449,472. This is truly an instance where the number speaks for itself, marking the most successful campaign in University history. This achievement demonstrates the strength of the CSU-Pueblo community.

A major success of the campaign is the sheer number of people with different connections to CSU-Pueblo who have stepped forward to support and advance the University's future. Donations to the campaign came from all 50 states and the District of Columbia. The campaign attracted 2,018 new donors who gave nearly \$1.7 million. This type of support exemplifies the forward momentum created as a result of the On the Move Campaign.

The support raised during the On the Move campaign has made a large and lasting impact on CSU-Pueblo. The original components of the campaign included \$15 million for academic scholarship, \$5 million toward the renovation/expansion of the Occhiato University Center, and \$5 million toward athletics expansion and enhancements.

One notable accomplishment that occurred during the On the Move campaign is the increase in scholarship awards. During the campaign, nearly 60 new scholarship funds were created. Over the last three academic years, nearly \$6 million has been awarded to close to 2,400 deserving students.

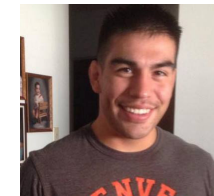
The funds raised in the last three years notably enhance the future that we are creating through our graduates. The University has grown from Pueblo Junior College, to Southern Colorado State College, to University of Southern Colorado, and now Colorado State University – Pueblo as a result of support from many different people through many years. The University has continually moved forward because of the education we provide to our students which provides a direct impact to our community.

In the arc of institutional history, the successful achievement of the On the Move goal in particular should be hailed as a milestone. As the achievement of more than 13,517 total gifts received to the CSU-Pueblo Foundation the entire alumni base should be proud and assured that CSU-Pueblo will continue to provide a quality education and college experience to many future students.

Sincerely,



THANK YOU



Keenan Wyatt, Sophomore, Helen McLoraine Scholarship

"I cannot express how grateful I am for this scholarship and being a recipient of such abundant generosity inspires me to do the same and help college students in need. Thank you for the scholarship and the inspiration."

Destiny Campa Meza, Senior, Walter and Lucille Timme Scholarship

"Your generosity will enable me to complete my studies and attain my degree this spring. Aside from financial assistance, you have provided me with inspiration to move forward. Your kindness is sincerely appreciated."



More than 520 donors and students attended the Annual Friends and Scholars Luncheon in September.

More than \$2.5 Million Awarded to CSU-Pueblo Students

This year, the Foundation has awarded over 900 scholarships at a total dollar amount of \$2.5 million! The CSU-Pueblo Foundation gave an average scholarship of \$2,777 to each CSU-Pueblo scholar.

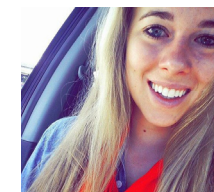


The Foundation hosted more than 125 guests at the annual President's Club Reception in February 2016.



The scholarship fundraiser, Cocktails & Creations hosted more than 120 attendees.

2016



Maggie Geolat, Senior, Virginia E. Ullman Academic Scholarship

By awarding me this scholarship, you have helped lighten the burden of the cost associated with higher education learning. For my final year of school, I will be able to focus solely on my education, and not worry about financial aspects. Thank you once again for your generosity.

The cost of tuition and student fees has risen for this academic year. This is an average yearly bill for a student attending CSU-Pueblo in 2016-2017.

* Based on an average (15 credit hours) in-state tuition bill per year.
** Based on a standard share occupancy room and meal plan

The figures below detail the amount due each year for a student to afford a college education.

Tuition - \$7,268.70*
Mandatory Fees - \$2,250.08*
Average Book Costs - \$1,900*
Average Room & Board - \$9,910*
TOTAL DUE = \$21,328.78

**Rising
Cost of Tuition**

**Understanding
Your Stewardship
Report**

1. Your balance as of July 1, 2016 is highlighted and labeled as "Ending Balance."
2. The lines titled "Contributions" and/or "Allocated Income" are revenue to the account.
3. Displayed expenses to the account will list scholarships awarded and administration fees.
4. The balance of your account does not reflect scholarships for the current academic year.

CSU - PUEBLO FOUNDATION

Statement of Financial Position

All data represents one year of activity from July 1, 2015 to June 30, 2016

BALANCE SHEET

ASSETS

Cash and cash equivalents	\$1,174,452
Accounts receivable	29,600
Unconditional promises to give, net	243,073
Marketable securities	32,988,486
Miscellaneous assets	602
Beneficial interest in remainder trusts	232,222
Investment in real estate	205,000
Investment in limited partnership	297,500
Leasehold improvements and office equipment	102,233
Less accumulated depreciation	(76,918)

TOTAL ASSETS \$35,196,250

LIABILITIES AND NET ASSETS

LIABILITIES

Accounts payable	\$512,390
Other liabilities	38,307

TOTAL LIABILITIES 550,697

NET ASSETS

Unrestricted net assets	1,604,020
Temporarily restricted	15,411,640
Permanently restricted	17,629,893

TOTAL NET ASSETS 34,645,553

TOTAL LIABILITIES AND NET ASSETS \$35,196,250

REVENUE AND SUPPORT

Contributions	\$6,104,486
In-kind contributions	387,183
Fundraising revenue	271,172
Dividends	1,651,488
Interest	2,193
Realized loss on sale of marketable securities	(49,426)
Unrealized loss on marketable securities	(1,455,717)
Net rental income	33,226
Miscellaneous income	36,278
Changes in the value of split-interest agreements	(13,138)

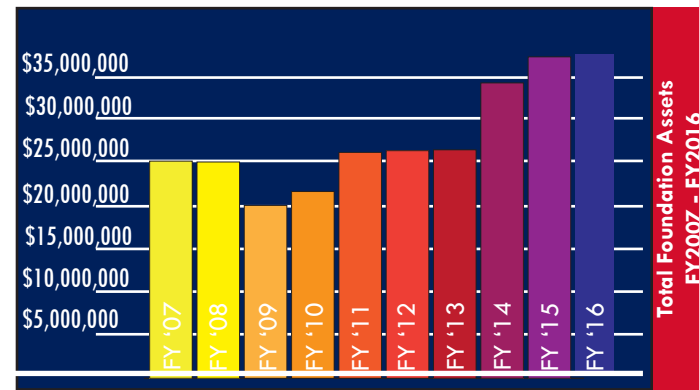
TOTAL REVENUE AND SUPPORT 6,967,745

EXPENSES

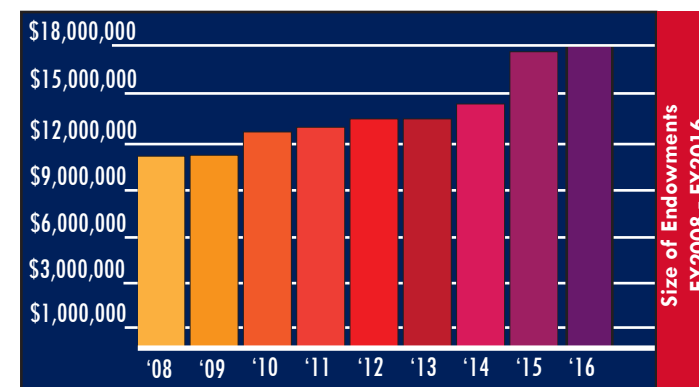
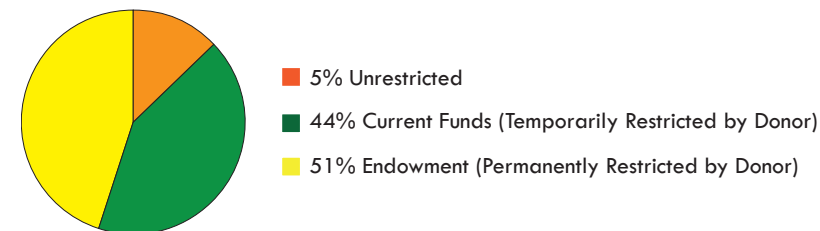
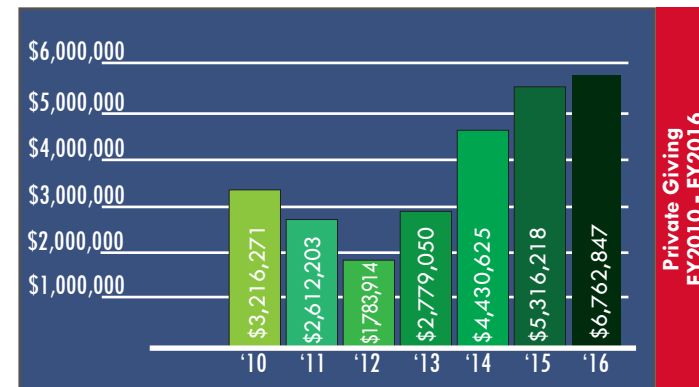
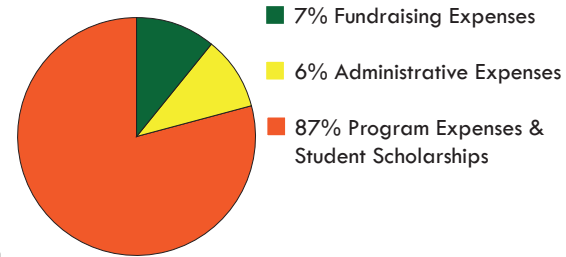
Program expenses	6,341,399
Management and general	462,481
Fundraising	493,859
TOTAL EXPENSES	7,297,739

Financial Summary

Reporting Our Progress - Measuring Your Impact



The Better Business Bureau's Standards for Charity Accountability recommends that non-profits spend at least 65 percent of their total expenses on program activities. In 2016, the CSU-Pueblo Foundation spent 87 percent of total expenses on program activities that directly impact students.



2016

Stewardship Report

CSU-Pueblo Foundation

2200 Bonforte Blvd.

Pueblo, CO 81001

719.549.2380

www.csupueblofoundation.org



Colorado
State
University
PUEBLO
FOUNDATION